

# ACT NEWS 2007

# ADCUTECH Ltd

Issue 2

## We Offer You

Short Lead Times

Value for money

A One Stop Shop

High Quality

Flexibility

Total Commitment

Design Solutions

## ADCUTECH'S Capacity

### CNC Milling

2 off Haas VF-0E Vertical Machining Centres  
X760. Y400. Z500. mm

1 off Haas VF2-2SS SE Vertical Machining Centre

### CNC Turning

1 off Hardinge Talent 6/45 Turning Centre  
280 mm Dia X Z300. mm

1 off Akebono Challenger ST-42 Turning Centre  
280 mm Dia X Z300. mm

### Manual Milling

X850. Y350. Z350. mm

### Manual Turning

500 mm Dia X Z500. mm

### Surface Grinding

X500. Y180. Z180. mm

### Abrasive Cutting

X150. Y100. Z35. mm

## Evolution @ Adcutech

As ADCUTECH's business evolves so does the need for more skilled staff and hi-tech equipment.

Over the last 18 months we have invested in a new Haas VF2-SS SE Super-Speed vertical machining .

The VF2 Super-Speed has 12,000 rpm, inline direct-drive spindle, ultra-fast side-mount tool changer and high-speed rapids.

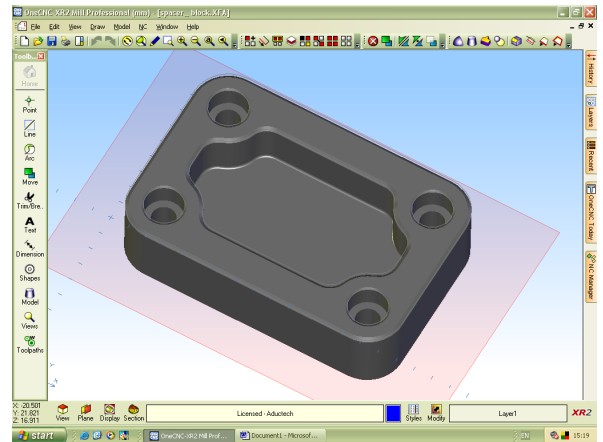
The enhanced performance of the VF2 Super-Speed has dramatically reduced cycle times as well as offering increased accuracy and smoother motion.

We have also purchased in a new CNC CAD-CAM/Solid Modelling software package.

The Windows based package is already proving a favourite with our engineers providing fast flexible programming for maximum productivity and an easy to use graphical interface. We can now read in part data from just about any CAD system.

OneCNC XR2 Mill Professional & OneCNC XR2 Lathe Express are pure geometry CAD/CAM design platforms offering:

- 2 & 2 1/2 Axis machining
- Importing from any source
- Solid modelling and machining
- 3 Axis Multi-Surface & Solid Machine

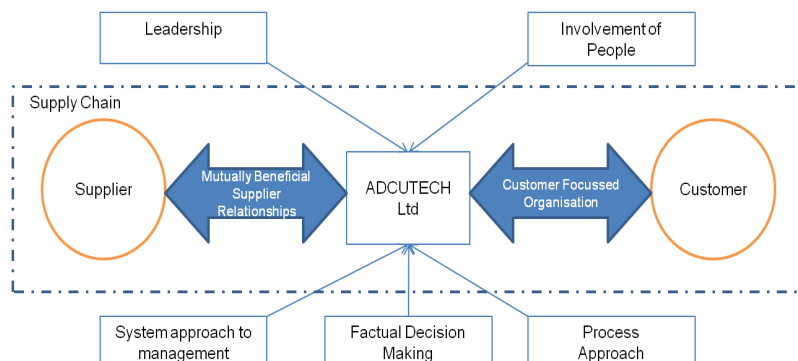


New recruits to ADCUTECH include Richard Wadiou who joins us from Sauer Danfoss. Richard has numerous years of CNC experience. He brings with him new ideas and techniques enhancing ADCUTECH's existing wealth of experience

Georgina Colman has also joined ADCUTECH this year. Previously a Purchasing Manager for a large organisation Georgina is focussing on implementing ISO9001:2000 whilst also managing general quality, sales, purchasing and financial responsibilities. Her experience of larger companies initiatives and operations will ensure that we implement processes and procedures that allow us to remain competitive in the industry as we continue to grow.

## Quality, Quality, Quality

At ADCUTECH we currently working towards ISO9001:2000 Certification. With a dedicated person responsible for procedures and process and checking that we are fully compliant we hope to be certified by the end of 2007.



ADCUTECH Ltd  
PACM House  
Blackworth Industrial Estate  
Highworth  
Wiltshire. SN6 7NA

Tel: 01793 765405  
Fax: 01793 766060

sales@adcutech.co.uk

Web: www.adcutech.co.uk